

# Maximum Accuracy



**Cylinder Boring Bars**



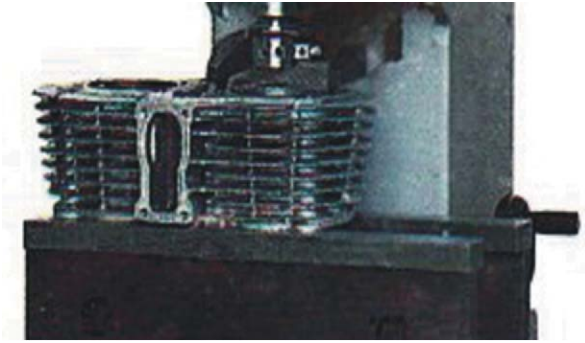
**Cylinder Honing Machine**

**For Automotive, Light Truck, Motorcycle,  
Marine & Small Engine Applications**

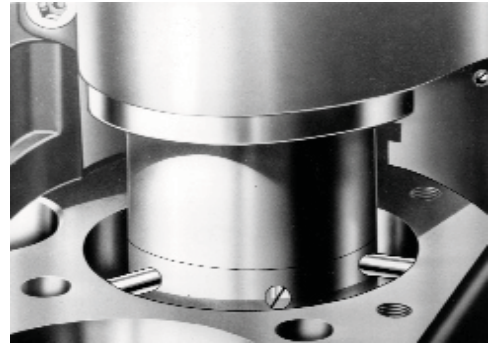
**[WWW.THLMACHINE.COM](http://WWW.THLMACHINE.COM)**

## Machine Features

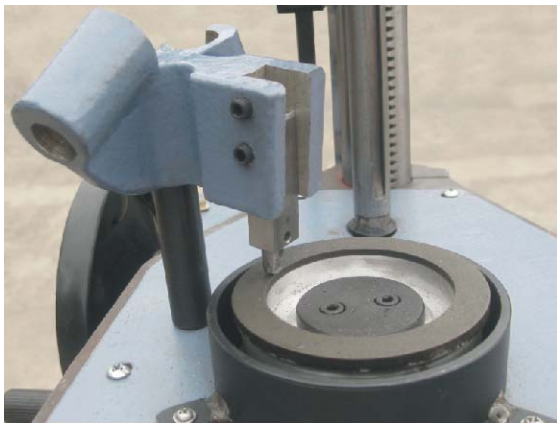
Quickly Clamping



Three finger centering



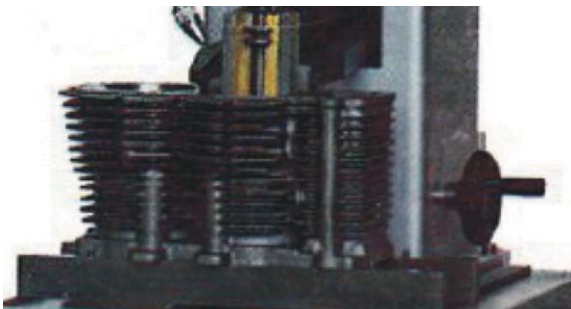
3 angles tool dressing



Special micrometer



Double cylinder

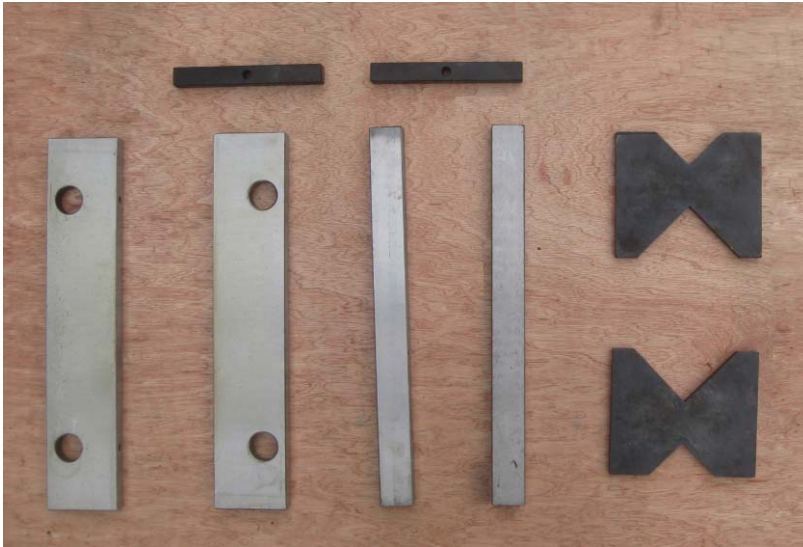


Square tool holder



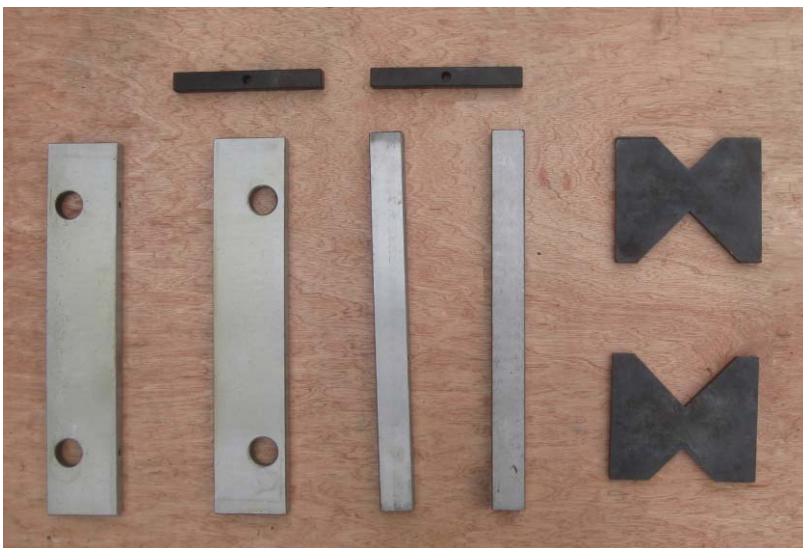
# Accessories

## SBM100



- 1x special micrometer
- Support kits
- centering rod 5sets
- tool holder 36-61mm and 60-85mm
- boring cutter 23mm and 32mm long

## SHM100



- Honing head
- MFQ40 40-60mm
- MFQ60 60-80mm
- MFQ80 80-120mm

# Machine Main Feature

## Cylinder Boring Bars

| <b>Specifications</b>                              |             |                                 |
|--|-------------|---------------------------------|
| <b>Model</b>                                       | <b>Unit</b> | <b>SBM100</b>                   |
| <b>Machine Capacity</b>                            |             |                                 |
| Max. boring diameter                               | mm          | 100                             |
| Min. boring diameter                               | mm          | 36                              |
| Max. alternative stroke of the spindle             | mm          | 220                             |
| <b>Technical Features</b>                          |             |                                 |
| Distance between upright and spindle axis          | mm          | 130                             |
| Min. distance between fastening brackets and bench | mm          | 170                             |
| Max. distance between fastening brackets and bench | mm          | 220                             |
| Spindle rotation speed                             | rpm         | 200/400                         |
| Spindle machining infeed speed                     | mm/rev      | 0.76                            |
| <b>Motor Powers</b>                                |             |                                 |
| Spindle rotation motor                             | kw          | 0.37/0.25                       |
| Supply voltages ( $\pm 5\%$ ) (three-phase )       | v           | 200/220/230/380/400/<br>415/440 |
| Supply voltages ( $\pm 5\%$ ) (Single-phase )      | v           | 200/220/230                     |
| Supply frequency ( $\pm 1\%$ )                     | HZ          | 50/60                           |
| <b>Dimension and weight</b>                        |             |                                 |
| Length   | mm          | 575                             |
| Depth with open front guard                        | mm          | 720                             |
| Width  | mm          | 390                             |
| Height   | mm          | 1700                            |
| Weight   | kg          | 122                             |

## Cylinder Honing Machine

| <b>Specifications</b>                              |             |               |
|--|-------------|---------------|
| <b>Model</b>                                       | <b>Unit</b> | <b>SHM100</b> |
| <b>Machine Capacity</b>                            |             |               |
| Max. honing diameter                               | mm          | 100           |
| Min. honing diameter                               | mm          | 36            |
| Max. alternative stroke of the honer               | mm          | 185           |
| <b>Technical Features</b>                          |             |               |
| Distance between upright and spindle axis          | mm          | 130           |
| Min. distance between fastening brackets and bench | mm          | 170           |
| Max. distance between fastening brackets and bench | mm          | 220           |
| Spindle rotation speed                             | rpm         | 90/190        |
| <b>Motor Powers</b>                                |             |               |
| Spindle rotation motor                             | kw          | 0.3/0.15      |
| Refrigerating system motor                         | kw          | 0.09          |
| Supply voltages ( $\pm 5\%$ )                      | v           | 380/400       |
| Supply frequency ( $\pm 1\%$ )                     | HZ          | 50            |
| <b>Dimension and weight</b>                        |             |               |
| Length   | mm          | 400           |
| Width  | mm          | 580           |
| Height   | mm          | 1600          |
| Weight   | kg          | 117           |